

**TORO®**

## **DINGO® COMPACT TOOL CARRIER**

**WHEELED / TRACKED / VERTICAL LIFT / RADIAL LIFT**







## DINGO® SELECTION GUIDE

### WHEELED MODELS



	Petrol	Diesel	Ride-On	Radial Lift
Dingo 323	X		X	X
Dingo 320D		X	X	X

### TRACKED MODELS

Available in both wide and narrow track



	Petrol	Diesel	Ride-On	Radial Lift	Vertical Lift
TX 427	X		*	X	
TX 525		X	*	X	
TX 1000		X	X		X

\*Ride-on platform available as optional part





# SAVE LABOR, DO MORE AND FINISH FASTER.

Think of all the tasks you do every day. Now imagine how much faster you could do them with a Toro® Dingo®. The versatile Dingo is an efficient alternative to hand labor, skid-steer loaders and compact track loaders — especially in tight spots other equipment can't reach. And the light footprint is gentle on turf. It's a simple way to boost productivity and expand your business — and now our full lineup offers more choices than ever. Whether you need wheels or tracks, petrol or diesel, or radial lift or vertical lift capabilities, there's a Dingo that's right for you.



#### HANDLE VIRTUALLY ANY TASK

The Dingo works with a wide range of available attachments. You can do anything from augering, earthmoving, tilling and trenching to leveling, lifting,

hauling and demolishing with one machine. Plus, with our full lineup, you can choose from petrol or diesel models with tracks or wheels to fit the jobs you need to do.



**TX 1000**

**REACH HIGHER  
AND LIFT  
MORE**





# THE COMPACT TOOL CARRIER, REDEFINED.

The all-new TX 1000 - a giant step forward in performance and versatility. This lightweight manoeuvrable machine packs unmatched strength and reach in a compact package for the ultimate working advantage. The 454 kilogram (1,000 pound) rated operating capacity makes the TX 1000 a powerful, compact alternative to larger skid steer loaders and other machines.



## TX 1000 CONTROLS

New patent-pending control system exclusive to the Toro TX 1000 provides intuitive operation that's effortless for the operator, all day long.

- 1 Curl, dump or float the bucket while raising or lowering the loader arms with one hand using the joystick.
- 2 Grab the traction drive joystick for effortless, single-hand control.
- 3 Activate the auxiliary circuit control lever to power the attachments instantly.



## TX 1000 FEATURES



### UNMATCHED STRENGTH

Vertical lift loader arms allow the TX 1000 to lift and transport heavy loads with a category-leading rated operating capacity of 454 kg (1,000 lbs).



### MAXIMUM HEIGHT AND REACH

The 206 cm (81") hinge pin height allows attachments to easily clear the side of dumpsters.



### HIGH DRIVE TRACK SYSTEM

Ideal for the demands of any jobsite on any surface, even sand or loose gravel.



### COMPACT FOOTPRINT

The narrow model is just 86 cm (33.7") wide and fits through 100 cm (36") gates. At just 104 cm (41") wide, the wide-track model is also easy to manoeuvre.



**TX 427 & TX 525  
TRACKED DINGO**



**MORE WORK IN  
LESS TIME**



## RUGGED AND DEPENDABLE.

The original tracked compact tool carriers, Toro® TX 427 & 525 models deliver durability and reliability pros and Do-It-Yourselfers trust, combined with powerful performance and incredible versatility. For operators who are frequently switching tasks or moving things out of the way, these walk-behind models provide greater productivity due to the ability to walk up to the machine and go. In addition, with walk-behind Dingos, operators don't feel the bumps when going over rough terrain.



### EXCLUSIVE TX CONTROLS

Three simple controls let operators get to work fast:

- 1 Curl, dump or float the bucket while raising or lowering the loader arms with one hand using the joystick.
- 2 Grab the one-handed traction drive from any angle for effortless control.
- 3 Activate the auxiliary circuit control lever to power the attachments instantly.



## TX 427 & TX 525 FEATURES



### LOW-IMPACT FOOTPRINT

Long-lasting, Kevlar® reinforced tracks disperse weight evenly for a light footprint on turf, while delivering better traction in any ground conditions including sand, mud, gravel, rock, concrete or asphalt.



### EASY-TO-USE PLATFORM

Quickly and easily bolted on to Toro TX 427 & 525 models, this ride-on platform helps minimize operator fatigue when the job requires a lot of hauling or covers substantial distances. The platform can be flipped up – out of the way – any time the operator wishes.



### HIGH-PERFORMANCE HYDRAULICS

The 4-pump hydraulic system directs power right where you need it. Operate the loader, bucket, traction and auxiliary drives at the same time for increased operator efficiency.



### DIESEL AND PETROL ENGINES

Choose a petrol model for easy maintenance and cold-weather starting. Or choose diesel for better performance in high altitudes and warmer climates, along with more horsepower for attachments.



**323 & 320D  
WHEELED DINGO®**

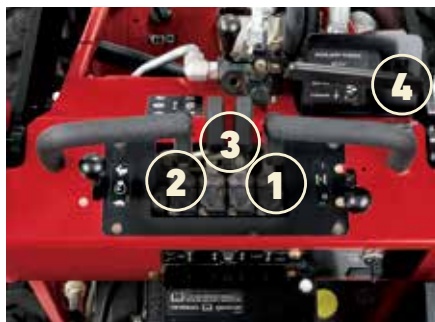
A man wearing a white hard hat, safety glasses, a white t-shirt, and blue jeans is operating a red Toro Dingo 220 skid steer loader. The loader is positioned on a gravel surface, and its lift arms are raised, carrying a wooden pallet loaded with several large white bags of material. The background features a red building, lush green trees, and a clear blue sky with some clouds. The overall scene is bright and sunny.

**BIG BENEFITS  
IN SMALL SPACES**



## GO WHERE YOU NEED TO WORK.

Access confined spaces you never thought possible with a wheeled Dingo compact tool carrier. These models offer zero-turn capability, along with a shorter length that's easy to load on a trailer. You also get reliable hydraulic power to use a wide range of attachments. If you do a lot of tasks in tight spaces or on hard surfaces, these are the models for you.



### DINGO® CONTROLS

Responsive controls make the wheeled Dingo highly manoeuvrable:

- 1** Curl or dump the attachment while raising or lowering the loader arms.
- 2** Raise and lower loader arms.
- 3** Traction drive control.
- 4** Activate the auxiliary circuit control lever to power the attachments instantly.



## 323 & 320D FEATURES



### HIGHLY MANOEUVRABLE

Short wheelbase design offers excellent manoeuvrability. Get into tight spaces where only hand labor could go before.



### TWO TRANSPORT SPEEDS

Low speed sends more hydraulic power to the attachment and high speed sends more power to the wheels. The low speed option also helps new operators shorten their learning curve.



### IMPROVED VISIBILITY

The integrated ride-on operator platform allows improved visibility of the working area and attachments.



### 4-PAW™ INDEPENDENT FOUR-WHEEL DRIVE

Four independent wheel motors deliver hydraulic flow and pressure to all four wheels for improved traction and mobility. Fewer moving parts also mean less maintenance.





# GET THE JOB DONE

## TORO QUICK ATTACH SYSTEM CHANGE ATTACHMENTS IN SECONDS



- 1 Mount to the attachment plate on the unit.
- 2 Twist the pins to locked position.
- 3 For powered attachment, connect hydraulic lines to dripless flush-face quick couplers on loader arms.

## TRENCHING, PLOWING, AND BORING EQUIPMENT



### BORE DRIVE HEAD AND ROD & REAMER KIT

*(sold separately)*  
Easily bore under driveways and sidewalks to simplify irrigation and cable installations.



### VIBRATORY PLOW

Reduce time spent on irrigation or cable installations. The vibratory plow optimizes pipe-pulling performance while minimizing turf damage. Extremely tight turning radius allows for tight manoeuvring in confined spaces.



### TRENCH FILLER

Two sets of opposing augers direct spoils into the hole. Standard float mechanism allows for up to 12.7 cm (5") of ground following flotation. Skids evenly disperses weight and slide easily over turf, minimizing damage.



# TORO® DINGO® COMPACT TOOL CARRIER ACCESSORIES

## SUPERIOR DESIGN FOR LONG-LASTING, DEPENDABLE PERFORMANCE AND THE PERFECT FIT.

Genuine Toro Dingo attachments are your best assurance for attaining a long life and peak performance from your CTC. Designed specifically for the Dingo, the attachments are easy to operate and deliver clear sight lines.



### TRENCHING, PLOWING AND BORING SPECIFICATIONS

Model #	Attachment Description	Dimensions (W* x L x H)	Weight (kg)
22420	Bore Drive Head Attachment (Bore diameter 3.2-8.9cm)	61cm x 56cm x 63.5cm	54.4
22421	Rod and Reamer (Bore diameter 3.2-11.3cm)	-	26.3
22472	Trench Filler	122cm x 79cm x 56cm	186

Model #	Attachment Description	Dimensions (W x L x H)	Weight (kg)
22473	High-Torque Trencher Head	89cm x 165cm x 61cm	177
22474	High-Speed Trencher Head	89cm x 165cm x 61cm	177
22911	Vibratory Plow	74cm x 89cm x 61cm	181.4

\*Working Width



### HIGH-SPEED TRENCHER

Ideal for fast, efficient trenching in most soil conditions. 61 cm (24"), 91.4 cm (36") and 122 cm (48")\* booms available. Chain speed: 41.6 l/min at 207 bar (187 rpm at 11 gpm). Torque: 297 m/kg at 207 bar (442 ft/lbs at 3000 psi)

\*Longer, optional spoils auger recommended for 122 cm (4') boom



### HIGH-TORQUE TRENCHER HEAD

Guarantees performance in difficult soil conditions. 61 cm (24"), 91.4 cm (36") and 122 cm (48")\* booms available. Chain speed: 41.6 l/min at 207 bar (120 rpm at 11 gpm). Torque: 454 m/kg at 207 bar (675 ft/lbs at 3000 psi)

\*Optional spoils auger recommended for 122 cm (4') boom





# SIMPLE CONTROLS SERIOUS POWER

## AUGERS AND TREE CARE EQUIPMENT



### STUMP GRINDER

Rugged design and incredible hydraulic power, the Toro stump grinder will make powder of the toughest stumps. Grinds down as far as 42 cm (16.5") below grade. Grinds up to 91 cm (36") above grade. 43 cm (17") wheel diameter.



### HIGH-TORQUE AUGER POWER HEAD

Designed specifically to power up to 76 cm diameter augers in the toughest soil conditions. Auger bits from 15 cm (6") to 76 cm (30").



### UNIVERSAL SWIVEL AUGER POWER HEAD

Ensures "plumb" holes on uneven terrain up to 46 cm (18"). Perfect for installing fences.



# TORO® DINGO® COMPACT TOOL CARRIER ACCESSORIES

## AUGERING, EARTH MOVING, TILLING AND TRENCHING TO LEVELING, LIFTING, HAULING AND DEMOLISHING...THE OPTIONS ARE ENDLESS

With the wide array of attachments available — more than 35 — the Dingo compact tool carrier can perform big-machine applications like grading soil or carrying large amounts of material.



CTC ACCESSORIES

### AUGERS AND TREE CARE SPECIFICATIONS

Model #	Attachment Description	Dimensions (W x L x H)	Weight (kg)
22429	Stump Grinder (w/chip guard)	112cm x 51cm x 79cm	120
22438	Tree Fork (max load 82 kg)	62cm x 114cm x 32cm	77
22341	Adjustable Fork	79cm x 114cm x 69cm	73
22521	Grapple Rake	90cm x 46cm x 76cm	120
22805	High-Torque Auger Power Head	61cm x 41cm x 58cm	83
22806	Universal Swivel Auger Power Head	61cm x 43cm x 58cm	89

### AUGER BITS AND EXTENSIONS

Model #	Attachment Description	Model #	Attachment Description
22814	46cm (18") Auger Bit	22822	30cm (12") Full Flight Auger Bit
22815	61cm (24") Auger Bit	22823	38cm (15") Full Flight Auger Bit
22816	76cm (30") Auger Bit		
22818	30cm (12") Auger Bit Extension		
22819	61cm (24") Auger Bit Extension		
22820	15cm (6") Full Flight Auger Bit		
22821	23cm (9") Full Flight Auger Bit		



#### GRAPPLE RAKE

Grab, drag, lift and place brush and debris easily with up to 1,361 kg (3,000 lbs) of clamping force at the tine tips.



#### TREE FORK

Hydraulic fork arm opens to handle large trees and shrubs. Angle design allows for gentle handling.



#### ADJUSTABLE FORKS

Easily adjust forks to desired width. Carry fence posts, rocks, pallets, plants, fertilizer, irrigation supplies and more. Forks constructed of high-strength steel. Lift capacity up to 272 kg\* (600 lbs.); Maximum lift height: 155 cm (61").

*\*Dependent upon Dingo model used.*





# MAKES MOVING MATERIALS EASY

## EARTH MOVING AND DIGGING EQUIPMENT



### LEVELER

Grade, finish, and spread topsoil and other landscape materials. Back fill trenches. Carry job site materials such as plants, fertilizer, irrigation supplies, and more.



### SOIL CULTIVATOR

Bury stones, soil clods, debris and grass. Prepares seed bed in one pass, tilling soil up to 14 cm (5.5") deep. Adjustable grading bar and comb teeth leave perfect germination environment.



### TILLER

Hardened steel tines for any soil condition, including clay or hardpan. Till more than six inches deep and 102 cm (40") wide on one pass. Reversible tine direction frees jams quickly.



# TORO® DINGO® COMPACT TOOL CARRIER ACCESSORIES

## MANY ATTACHMENTS WITH ONE GOAL: PRODUCTIVITY

A wide variety of attachments, including buckets, augers, trenchers and forks, make the Dingo a more cost effective choice than a dedicated piece of equipment. In short, get more work done in less time.



### BUCKET SPECIFICATIONS

Model #	Attachment Description	Dimensions (W x L x H)	Weight (kg)	Capacity (litres)
22409	4 cu.ft.n Standard Bucket	107cm x 61cm x 35.6cm	52	110
22410	Loose Materials Bucket	122cm x 66cm x 46cm	79	180
22520	Narrow Bucket	88cm x 68cm x 64cm	69	100
22340	TX 1000 Standard Bucket	104cm x 58cm x 38	78	120
22342	TX 1000 High Volume Bucket	135cm x 74cm x 43cm	115	250

### EARTH MOVING EQUIPMENT SPECIFICATIONS

Model #	Attachment Description	Dimensions (W x L x H)	Weight (kg)	Model #	Attachment Description	Dimensions (W x L x H)	Weight (kg)
22426	Direct Drive Power Box Rake	122cm x 124cm x 53cm	166	23163	Backhoe	88cm x 104cm x 180cm	346
22445	102cm (40") Tiller	112/102cm Tilling Width x 51cm x 66cm	165	23161	Wheeled Backhoe Fit-up Kit*	-	10
23102	Soil Cultivator	130cm x 130cm x 53cm	165	23162	TX Backhoe Fit-up Kit**	-	37
				23165	Leveler	80cm x 105cm x 69cm	73

\*Backhoe fit-up kit for models 22317 & 22318

\*\*Backhoe fit-up kit for models 22321, 22322, 22323 & 22324

\*Not compatible with 22327 & 22328



### POWER BOX RAKE

Perfect tool for seed or sod bed preparation. Carbide-teeth rotary drum pulverizes rough soil, cuts high spots and fills low spots in one pass. Manually adjustable yoke allows 20° offset. Overall width: 170 cm (67"); Working width: 122 cm (48").



### BUCKETS

Perfect for light-duty grading, leveling, and material handling. Buckets vary in capacity from 120 to 250 litres (4.3 cu. ft. to 9 cu. ft.) for lighter materials.



### BACKHOE

Versatile — dig foundations, plant trees, trench and much more. Folds to 88 cm (34.5") wide for access to tight spaces and ease of transport. 180° bucket and swing arm rotation, 208 cm (82") digging depth, and standard 33 cm (13") bucket.





# YOU CAN HANDLE IT

## MATERIAL HANDLING EQUIPMENT



### CEMENT BOWL

Flighting mixes and holds cement in bowl. Mix, haul, and pour up to 91 kg (200 lbs.) Auger power head required (sold separately).



### MANUAL OR HYDRAULIC FORKS

Transport and position trees and large shrubs exactly where you want them with exceptional manoeuvrability.



### HYDRAULIC CONCRETE BREAKER

The hydraulic breaker is the perfect tool for precision demolition. Combined with the compact size and ease of use of the Dingo, the breaker simplifies the difficult job of breaking concrete, asphalt, rock or brick during renovation jobs.



# TORO® DINGO® COMPACT TOOL CARRIER ACCESSORIES

## TACKLE A LOT MORE WORK IN LESS TIME.

Uses for the Toro® Dingo and its various attachments are limited only by your imagination.



### MATERIAL HANDLING SPECIFICATIONS

Model #	Attachment Description	Dimensions (W x L x H)	Weight (kg)
22423	Multi-Purpose Tool	61cm x 10cm x 25cm	18
-	Boom Jib	2cm x 82cm x 24cm	10.5
-	Scarifier Teeth	5cm x 33cm x 30cm	4
22442	Cement Bowl		34
22456	Snowthrower	122cm x 110cm x 128cm	119
23135	Concrete Breaker	63.5cm x 127cm x 33cm 43cm length x 5cm diameter	119
22414	Utility Blade	122cm x 64cm x 53cm	96

### MISCELLANEOUS SPECIFICATIONS

Model #	Attachment Description	Weight (kg)
22475	TX Platform (Petrol)	43
22476	TX Platform (Diesel)	43
22464	Trencher Crumber Kit	24
22417	Counter Weight	83



### SNOWTHROWER

Two-stage design with the power to handle the toughest snow conditions. Replaceable scraper. Adjustable skids. Overall Width: 122 cm (48")  
Clearing width 111 cm (44").



### MULTI-PURPOSE TOOL

Plant and haul trees or dig and breakup soil with the 3-in-1 ripper, towbar and boom.



### UTILITY BLADE

Backfill trenches, move or smooth dirt or even use to clear snow.



# MEET THE FAMILY



## TX 1000 SPECIFICATIONS

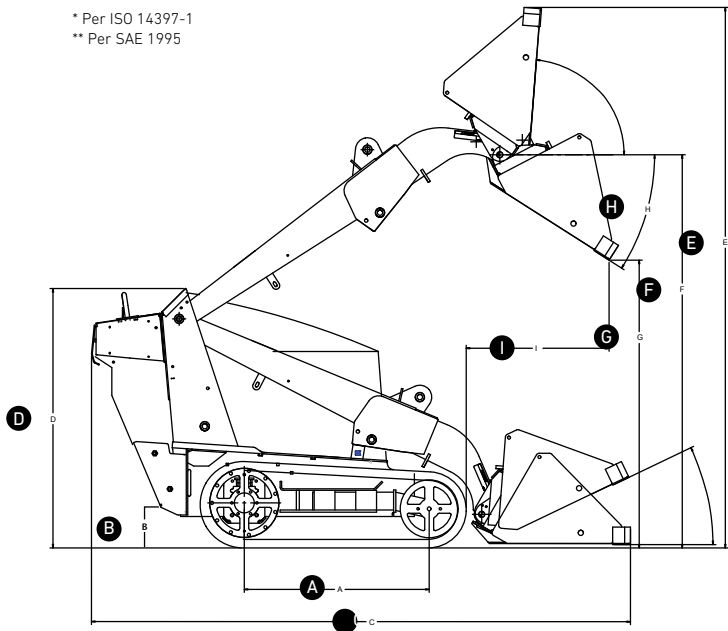
	TX 1000 NARROW TRACK 22327	TX 1000 WIDE TRACK 22328
DIMENSIONS	A Wheelbase	41" (104 cm)
	B Ground Clearance	6.0" (15 cm)
	Overall Width	33.7" (86 cm) 41" (104 cm)
	C Overall Length	100.7" (256 cm) w/bucket; 81.7" (208 cm) w/o bucket
	D Overall Height	53.2" (135 cm)
	E Max Operating Height	105" (267 cm)
	F Hinge Pin Height	81" (206 cm)
	G Dump Height	61" (155 cm)
	H Dump Angle	40-degrees
	I Reach - Fully Raised	24.5" (62 cm)
ENGINE	Ground Speed (F/R)	4.7 mph (7.6 km/h)/ 14.7 mph (7.6 km/h)
	Weight	2,610 lbs (1184 kg) 2,790 lbs (1266 kg)
	Tip Capacity	2,857 lbs (1,296 kg) 3,071 lbs (1,393 kg)
	Rated Operating Capacity (35% of Tip Capacity)*	1,000 lbs (454 kg) 1,075 lbs (488 kg)
	Engine	Kubota® D1305
	Manufacturer's Gross HP Rating at RPM**	24.9 HP (18.6 kW) @ 2600 rpm
	Displacement	77 cu. in. (1262cc)
	Fuel Type	Diesel
	Air Filter	Two-stage, heavy-duty, remote
	Cooling System	Liquid Cooled
OPERATION	Fuel Tank	11.5 gallons (44 litres)
	Oil Capacity	6.0 quarts (5.7 litres)
	Loader Arms	Vertical
	Hydraulic Pressure	3,000 PSI (207 Bar)
	Hydraulic Flow	Traction: 50.35 l/min (13.3gpm) (each pump); Auxiliary: 57.54 l/min (15.2 gpm)
	Reservoir Capacity	10 gallons (57.5 litres)
	Tracks	Sprocket-drive, 6 road wheels per side
	Traction	Dual hydrostatic pump
	Track Length x Width	127.6" x 5.9" (324 cm x 15 cm) 127.6" x 9.5" (324 cm x 24 cm)
	Ground Pressure	5.4 PSI (.37 Bar) 3.6 PSI (.25 Bar)

\* Per ISO 14397-1  
\*\* Per SAE 1995

## TX 427 & TX 525 SPECIFICATIONS

	TX 525 22323	TX 525 WIDE 22324
DIMENSIONS	A Wheelbase	31.2" (79 cm)
	B Ground Clearance	4.6" (11.7 cm)
	Overall Width	33.7" (85.6 cm) 41" (104 cm)
	C Overall Length	92" (233.7 cm) w/bucket; 70.7" (180 cm) w/o bucket
	D Overall Height	46.1" (117.1 cm)
	E Max Operating Height	90.1" (229 cm)
	F Hinge Pin Height	65.8" (167.1 cm)
	G Dump Height	46.1" (117.1 cm)
	H Dump Angle	38-degrees
	I Reach - Fully Raised	21.8" (55.4 cm)
ENGINE	Ground Speed (F/R)	0-4.5 mph (0-7.2 km/h) / 0-2.0 mph (0-3.2 km/h)
	Weight	1,904 lbs (864 kg) 2,013 lbs (907 kg)
	Tip Capacity	1,580 lbs. (717 kg)
	Rated Operating Capacity (35% of Tip Capacity)*	553 lbs. (251 kg)
	Engine	Kubota D902
	Manufacturer's Gross HP Rating at RPM**	23.3 HP (17.3 kW) @ 3400 rpm
	Displacement	55 cu. in. (901cc)
	Fuel Type	Diesel
	Air Filter	Two-stage, heavy-duty, remote
	Cooling System	Liquid Cooled
OPERATION	Fuel Tank	6.0 gallons (23 litres)
	Oil Capacity	3.84 quarts (3.63 litres) 2.0 quarts (2.95 litres)
	Loader Arms	Radial
	Hydraulic Pressure	3,000 PSI (207 Bar)
	Hydraulic Flow	Traction: 63.97 l/min (16.9 gpm) (each pump); Auxiliary: 52.24 l/min (13.8 gpm)
	Reservoir Capacity	10.5 gallons (40 litres)
	Tracks	Sprocket-drive, 10 road wheels per side
	Traction	Dual hydrostatic pump
	Track Length	96.6" x 5.9" (245 cm x 15 cm) 96.6" x 9.5" (245 cm x 24 cm)
	Ground Pressure	5.0 PSI (.34 Bar) 3.5 PSI (.24 Bar)

\* Per ISO 14397-1  
\*\* Per SAE 1995







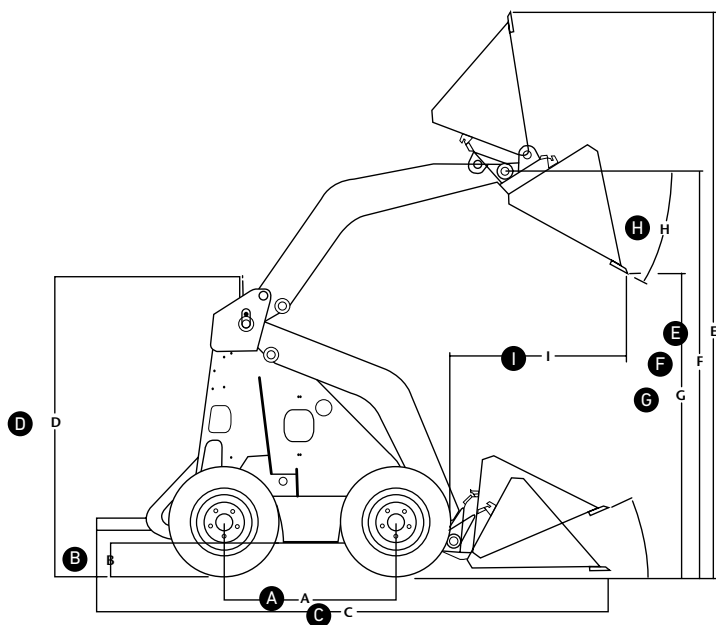
## DINGO® 323 &amp; 320-D SPECIFICATIONS

TX 427 22321	TX 427 WIDE 22322
31.2" (79 cm)	
4.6" (11.7 cm)	
33.7" (85.6 cm)	41" (104 cm)
92" (233.7 cm) w/bucket; 70.7" (180 cm) w/o bucket	
46.1" (117.1 cm)	
90.1" (229 cm)	
65.8" (167.1 cm)	
46.1" (117.1 cm)	
38-degrees	
21.8" (55.4 cm)	
0-4.5 mph (0-7.2 km/h) / 0-2.0 mph (0-3.2 km/h)	
1,882 lbs (854 kg)	1,990 lbs (902 kg)
1,530 lbs. (694 kg)	
535 lbs. (243 kg)	
Kohler Command Pro Series CH 740	
24.8 HP (18.4 kW) @ 3600 rpm	
44 cu. in. (725cc)	
Petrol	
Two-stage, heavy-duty, remote	
Air Cooled	
6.0 gallons (23 litres)	
2.0 quarts (2.95 litres)	
Radial	
3,000 PSI (207 Bar)	
Traction: 63.97 l/min (16.9 gpm) (each pump); Auxiliary: 43.15 l/min (11.4 gpm)	
10.5 gallons (40 litres)	
Sprocket-drive, 10 road wheels per side	
Dual hydrostatic pump	
96.6" x 5.9" (245 cm x 15 cm)	96.6" x 9.5" (245 cm x 24 cm)
5.0 PSI (.34 Bar)	3.5 PSI (.24 Bar)

	DINGO 323 22318	DINGO 320-D 22337CP
A Wheelbase	28" (71 cm)	
B Ground Clearance	5.8" (15 cm) front & rear	
Overall Width	40.5" (103 cm) standard tyres; 35" (90 cm) narrow tyres	
C Overall Length	82.2" (208.8 cm) w/bucket; 62" (157.5 cm) w/o bucket	
D Overall Height	48.7" (123.7 cm)	
E Max Operating Height	91.2" (231.6 cm)	
F Hinge Pin Height	66" (167.6 cm)	
G Dump Height	47" (119 cm)	
H Dump Angle	34-degrees	
I Reach – Fully Raised	28" (71.1 cm)	
Ground Speed (F/R)	0-3.7 mph (0-6 km/h) / 0-3.7 mph (0-6 km/h)	0-3.0 mph (0-4.8 km/h) / 0-3.0 mph (0-4.8 km/h)
Weight	1,567 lbs (711 kg)	1,722 lbs (781 kg)
Tip Capacity	1,030 lbs (467 kg)	1,048 lbs (475 kg)
Rated Operating Capacity (50% of Tip Capacity)*	515 lbs. (234 kg)	524 lbs. (238 kg)
Engine	Kohler® Command Series CH23	Kubota D722
Manufacturer's Gross HP Rating at RPM*	23 HP (17.2 kW) @ 3600 rpm	20 HP (14.9 kW) @ 3600 rpm
Displacement	41 cu. in. (674cc)	43.88 cu. in. (719 cc)
Fuel Type	Petrol	Diesel
Air Filter	Two-stage, heavy-duty, remote	
Cooling System	Air Cooled	Liquid Cooled
Fuel Tank	11.2 gallon (42.4 litre)	4 gallon (15 litre)
Oil Capacity	2 quarts (1.9 litres)	3.4 quarts (3.2 litre)
Loader Arms	Radial	
Hydraulic Pressure	3,250 PSI (224 Bar)	
Hydraulic Flow	40.88 l/min high-flow hydraulic circuit, 15.14 l/min low-flow hydraulic circuit	
Reservoir Capacity	17 gallons (64 litre)	14.8 gallons (56 litre)

\* Per ISO 14397-1

\*\* Per SAE 1995



## DIMENSIONS

- A Wheelbase
- B Ground Clearance
- C Overall Length
- D Overall Height
- E Maximum Operating Height
- F Hinge Pin Height
- G Dump Height
- H Dump Angle
- I Reach





Toro is always there to help you care for your landscapes the way you want,  
when you want, better than anyone else.



**Count on it.**



toro.com  
Worldwide Headquarters  
The Toro Company  
8111 Lyndale Ave. So.  
Bloomington, MN 55420 U.S.A.  
Phone: (1) 952 888 8801  
Fax: (1) 952 887 8258

©2016 The Toro Company.  
All Rights Reserved.  
Printed in the USA

200-6630na GB

Products depicted in this literature are for demonstration purposes only. Actual products offered for sale may vary in use, design, required attachments and safety features. We reserve the right to improve our products and make changes in specifications, design and standard equipment without notice and without incurring obligation. See your distributor for details on all our warranties.



facebook.com  
twitter.com/TheToroCompany  
youtube.com/ToroCompanyEurope