



2019-2020

TORO® TITAN®  
TINES CATALOG



# EXACT STANDARDS



## AERATION IMPROVES TURF CONDITIONS

Aeration keeps your turf looking great. It's important to aerate often, especially when it comes to high traffic areas, and with TITAN® TINES on your team you'll know you have the best equipment to meet all of your aeration needs successfully.

### TORO'S FAMILY OF TINES ARE DESIGNED TO MEET YOUR EXACT AERATION NEED

TINE	TIP	LONGEVITY	APPLICATION	WALL THICKNESS
Toro Classic	Standard durable heat treated tip	Good	Good quality in most turf conditions	Thin wall delivers durability and exceptional performance
TITAN	Sharp heat treated tip for improved hole quality and life	Better	Provides superior performance and long lasting wear in most turf conditions	Thin wall delivers durability and exceptional performance
TITAN Max	Sharp carbide tip for excellent hole quality and life	Best	Provides superior performance and long lasting wear in most conditions	Thin wall delivers durability and exceptional performance
TITAN Fairway	Standard heat treated fairway tip for consistent core removal	Better	Provides quality performance in natural soil conditions	Thicker wall provides good hole quality and maximum strength
TITAN HD Fairway	Enhanced hardened tip for 75% longer life than TITAN Fairway	Best	Provides excellent performance and wear in extreme conditions	Thicker wall provides good hole quality and maximum strength

# A TINE TO FIT EVERY APPLICATION

Toro® has about every possible tine you can imagine for the changing seasons and your most demanding turf conditions. TITAN® Tines offer superior quality to provide your grounds the best possible care.

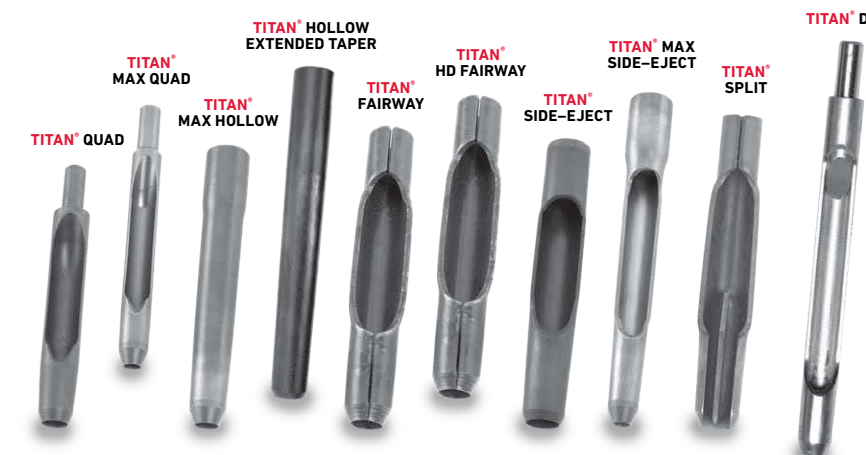
Jump-start your productivity with the TITAN QuickChange™ tine head. The patent-pending taper-lock design makes changing tines a snap. In fact, many users have reduced set-up time by up to 75%. TITAN QuickChange will help you get your aeration done FAST!



## TORO TITAN TINES

- Over 150 tines, providing multiple aeration choices
- A wide variety of types meeting your exact aeration requirements
- Higher Productivity: TITAN Max designed with long lasting tungsten carbide blend tip
- Better Performance: TITAN tines last approximately 3-4 times longer than standard tines
- An optimized core, removing more thatch for maximum topdressing
- A superior hole, improving recovery time and maintaining playability

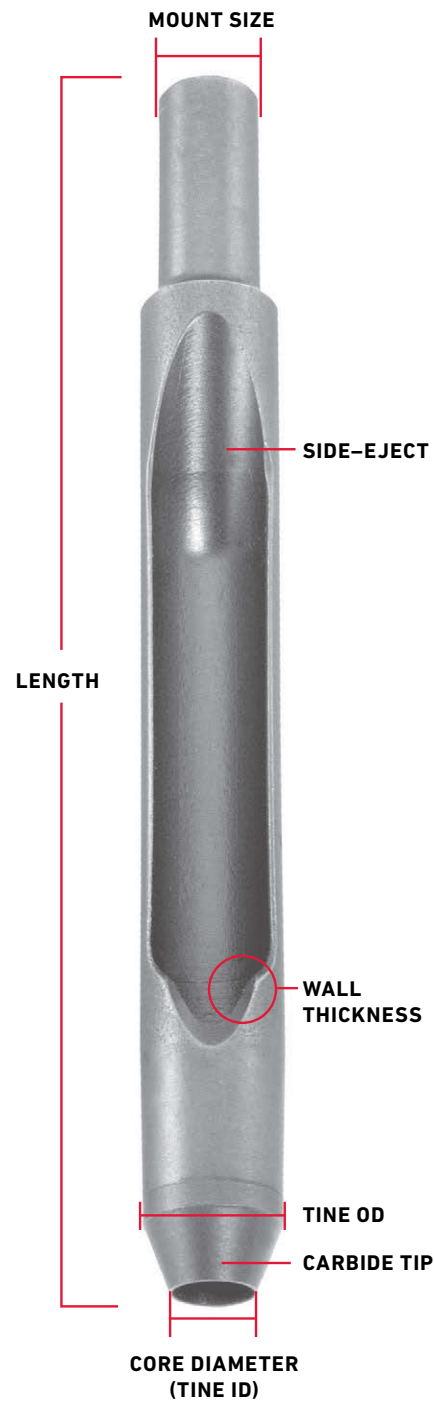
### CORING TINES



### SOLID TINES



# SELECTION & MEASUREMENT

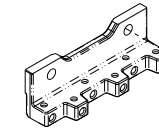


## U.S. STANDARD SIZES

1/4" (.25")	
3/8" (.375")	
1/2" (.5")	
5/8" (.625")	
3/4" (.75")	
7/8" (.875")	

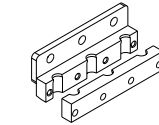
TITAN® TINES fit all current and late model Toro® aerators. Standard mount size fits most competitor equipment. Check mounting size to ensure compatibility. Prices subject to change without notice.

### PROCORE® 648/864/1298 (See pages 7-16)



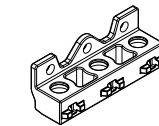
#### QUAD TINE HEAD (1x6)

Tine Mount	3/8"
Qty. of Tines	6



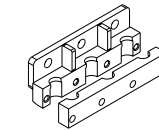
#### 3/4" 3-TINE HEAD

Tine Mount	3/4"
Qty. of Tines	3



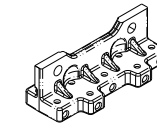
#### QUICKCHANGE 3-TINE HEAD

Tine Mount	3/8" or 7/8"
Qty. of Tines	3



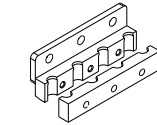
#### 7/8" 3-TINE HD HEAD

Tine Mount	7/8"
Qty. of Tines	3



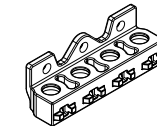
#### QUAD TINE HEAD (2x5)

Tine Mount	3/8"
Qty. of Tines	10



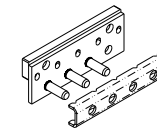
#### 3/4" 4-TINE HEAD

Tine Mount	3/4"
Qty. of Tines	4



#### QUICKCHANGE 4-TINE HEAD

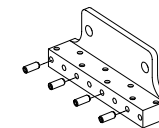
Tine Mount	3/8" or 7/8"
Qty. of Tines	4



#### NEEDLE TINE HEAD

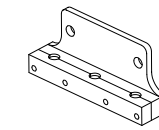
Tine Mount	Needle
Qty. of Tines	5

### PROCORE 440/660/880 (See pages 17-20)



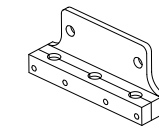
#### QUAD TINE HEAD (1x6)

Tine Mount	3/8"
Qty. of Tines	8



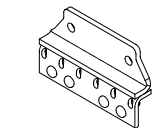
#### 3/4" 3-TINE HEAD

Tine Mount	3/4"
Qty. of Tines	3



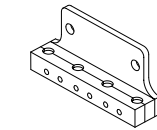
#### 7/8" 3-TINE HEAD

Tine Mount	7/8"
Qty. of Tines	3



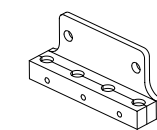
#### NEEDLE TINE HEAD

Tine Mount	Needle
Qty. of Tines	6



#### 3/4" 4-TINE HEAD

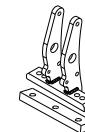
Tine Mount	3/4"
Qty. of Tines	4



#### 7/8" 4-TINE HEAD

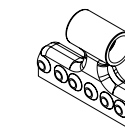
Tine Mount	7/8"
Qty. of Tines	4

### PROCORE SR SERIES (See pages 29-37)



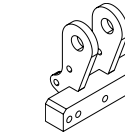
#### SR54-S / SR70-S

Tine Mount	5/16" or 12mm
Qty. of Tines	3 or 4



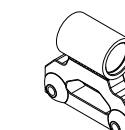
#### SR48 / SR72

Tine Mount	5/16" or 12mm
Qty. of Tines	3 or 4



#### SR54 / SR70

Tine Mount	5/16" or 12mm
Qty. of Tines	2 or 3



#### SR75

Tine Mount	5/16" or 12mm
Qty. of Tines	2 or 3

# PROCORE® SR SERIES



The ProCore SR Series provide working widths of 48" – 75" (122 – 190 cm), working depths up to 16" (40.6 cm) and hole spacing from 2.5" – 6" (6.3 – 15.2 cm).

## 12MM OR 18MM MOUNT

	Mount	Length	Core Dia. (ID)	OD	Part	Adapter Sleeve	Replacement Tube
<i>CORING TINES</i>							
	12mm	7.00"	.52"	.69"	SGC07625*	–	SGT07625
	12mm	7.00"	.56"	.81"	SGC07750*	–	SGT07750
	12mm	10.00"	.56"	.75"	SGC10755*	–	SGT10750
	12mm	10.00"	.56"	.81"	SGC10813H	–	SGT10813H
	18mm	8.00"	.94"	1.31"	SGC08125	–	SGT08125
	18mm	8.00"	.74"	1.06"	SGC08100H	–	SGT08100H
	18mm	10.00"	.56"	.75"	SGC10750	–	SGT10750
	18mm	10.00"	.74"	1.06"	SGC10100H	–	SGT10100H
	18mm	10.00"	.76"	1.00"	SGC10100S	–	SGT10100S
	18mm	12.00"	.94"	1.31"	SGC12125	–	SGT12125

## *SOLID TINES*

5/16"	8.50"	–	.31"	SGS07313	SGA08313	–
5/16"	10.00"	–	.31"	SGS08313	SGA08313	–
3/8"	9.00"	–	.38"	SGS08375	SGA12375	–
3/8"	10.75"	–	.38"	SGS10374	SGA12375	–
3/8"	12.25"	–	.38"	SGS10375	SGA12375	–
12mm	8.00"	–	12mm	SGS08500	–	–
12mm	10.75"	–	12mm	SGS10504	–	–
12mm	12.25"	–	12mm	SGS10500	–	–
12mm	14.25"	–	12mm	SGS12500	–	–
12mm	16.25"	–	12mm	SGS14500	–	–
18mm	12.25"	–	18mm	SGS10750	–	–
18mm	12.50"	–	18mm	SGS10875	–	–
18mm	14.00"	–	18mm	SGS12875	–	–
18mm	14.25"	–	18mm	SGS12750	–	–
18mm	16.00"	–	18mm	SGS14875	–	–
18mm	16.25"	–	18mm	SGS14750	–	–

## SR48 ADAPTER HEAD KIT 117-7190

### *SOLID TINES*

5/16"	8.50"	–	.31"	SGS07313	–	–
5/16"	10.00"	–	.31"	SGS08313	–	–

## SR48 ADAPTER HEAD KIT 117-7191

### *CORING TINES*

12mm	7.00"	.52"	.69"	SGC07624	–	SGT07625
12mm	7.00"	.56"	.81"	SGC07754	–	SGT07750
12mm	10.00"	.56"	.75"	SGC10754	–	SGT10750

### *SOLID TINES*

12mm	8.00"	–	12mm	SGS08500	–	–
12mm	12.25"	–	12mm	SGS10500	–	–
12mm	14.25"	–	12mm	SGS12500	–	–
12mm	16.25"	–	12mm	SGS14500	–	–

\*Longer shank tine.

**5/16" OR 12MM MOUNT**

Mount	Length	Core Dia. (ID)	OD	Part	Adapter Sleeve	Replacement Tube
<i>CORING TINES</i>						
3/8"	5.50"	.38"	.50"	SGC05550	SGA10375	-
12mm	7.00"	.52"	.69"	SGC07624	-	SGT07625
12mm	7.00"	.56"	.81"	SGC07754	-	SGT07750
12mm	10.00"	.56"	.75"	SGC10754	-	SGT10750
<i>SOLID TINES</i>						
5/16"	8.50"	-	.31"	SGS07313	-	-
5/16"	10.00"	-	.31"	SGS08313	-	-
3/8"	9.00"	-	.38"	SGS08375	SGA10375	-
3/8"	10.75"	-	.38"	SGS10374	SGA10375	-
12mm	8.00"	-	12mm	SGS08500	-	-
12mm	10.75"	-	12mm	SGS10504	-	-

**SR 54 ADAPTER HEAD KIT 117-7193 (36 TINES)**

<i>CORING TINES</i>						
3/8"	5.50"	.38"	.50"	SGC05550	-	SGT05550
<i>SOLID TINES</i>						
5/16"	8.50"	-	.31"	SGS07313	-	-
5/16"	10.00"	-	.31"	SGS08313	-	-
3/8"	9.00"	-	.38"	SGS08375	SGA10375	-
3/8"	10.75"	-	.38"	SGS10374	SGA10375	-
3/8"	12.25"	-	.38"	SGS10375	SGA10375	-

**5/16" OR 12MM MOUNT**

Mount	Length	Core Dia. (ID)	OD	Part	Adapter Sleeve	Replacement Tube
<i>CORING TINES</i>						
12mm	7.00"	.52"	.69"	SGC07624	-	SGT07625
12mm	7.00"	.56"	.81"	SGC07754	-	SGT07750
12mm	10.00"	.56"	.75"	SGC10754	-	SGT10750
<i>SOLID TINES</i>						
5/16"	8.50"	-	.31"	SGS07313	-	-
5/16"	10.00"	-	.31"	SGS08313	-	-
12mm	8.00"	-	12mm	SGS08500	-	-
12mm	10.75"	-	12mm	SGS10504	-	-

**SR 54-S ADAPTER HEAD KIT 117-7194 (12 TINES)**

<i>SOLID TINES</i>						
18mm	12.25"	-	18mm	SGS10750	-	-

**SR 54-S ADAPTER HEAD KIT 117-7195 (12 TINES)**

<i>CORING TINES</i>						
12mm	7.00"	.52"	.69"	SGC07624	-	SGT07625
12mm	7.00"	.56"	.81"	SGC07754	-	SGT07750
12mm	10.00"	.56"	.75"	SGC10754	-	SGT10750
<i>SOLID TINES</i>						
5/16"	8.50"	-	.31"	SGS07313	-	-
5/16"	10.00"	-	.31"	SGS08313	-	-
12mm	8.00"	-	12mm	SGS08500	-	-
12mm	10.75"	-	12mm	SGS10504	-	-

**SR 54-S ADAPTER HEAD KIT 117-7196 (24 TINES)**

<i>CORING TINES</i>						
3/8"	5.50"	.38"	.50"	SGC05550	-	SGT05550
<i>SOLID TINES</i>						
5/16"	8.50"	-	.31"	SGS07313	-	-
5/16"	10.00"	-	.31"	SGS08313	-	-
3/8"	9.00"	-	.38"	SGS08375	-	-
3/8"	10.75"	-	.38"	SGS10374	-	-

**SR 54-S ADAPTER HEAD KIT 117-7199 (48 TINES)**

<i>CORING TINES</i>						
3/8"	5.50"	.38"	.50"	SGC05550	-	SGT05550
<i>SOLID TINES</i>						
3/8"	9.00"	-	.38"	SGS08375	-	-
3/8"	10.75"	-	.38"	SGS10374	-	-

\*Longer shank tine.

**5/16" OR 12MM MOUNT**

Mount	Length	Core Dia. (ID)	OD	Part	Adapter Sleeve	Replacement Tube
<i>CORING TINES</i>						
3/8"	5.50"	.38"	.50"	SGC05550	SGA10375	SGT05550
12mm	7.00"	.52"	.69"	SGC07624	-	SGT07625
12mm	7.00"	.56"	.81"	SGC07754	-	SGT07750
12mm	10.00"	.56"	.75"	SGC10754	-	SGT10750
<i>SOLID TINES</i>						
5/16"	8.50"	-	.31"	SGS07313	-	-
5/16"	10.00"	-	.31"	SGS08313	-	-
3/8"	9.00"	-	.38"	SGS08375	SGA10375	-
3/8"	10.75"	-	.38"	SGS10374	SGA10375	-
12mm	8.00"	-	12mm	SGS08500	-	-
12mm	10.75"	-	12mm	SGS10504	-	-

**SR70 ADAPTER HEAD KIT 117-7193 (48 TINES)**

<i>CORING TINES</i>						
3/8"	5.50"	-	.50"	SGC05550	-	-
<i>SOLID TINES</i>						
5/16"	8.50"	-	.3125"	SGS07313	-	-
5/16"	10.00"	-	.3125"	SGS08313	-	-
3/8"	9.00"	-	.375"	SGS08375	-	-
3/8"	10.75"	-	.375"	SGS10374	-	-
3/8"	12.25"	-	.375"	SGS10375	-	-

**5/16" OR 12MM MOUNT**

Mount	Length	Core Dia. (ID)	OD	Part	Adapter Sleeve	Replacement Tube
<i>CORING TINES</i>						
12mm	7.00"	.52"	.69"	SGC07624	-	SGT07625
12mm	7.00"	.56"	.81"	SGC07754	-	SGT07750
12mm	10.00"	.56"	.75"	SGC10754	-	SGT10750
<i>SOLID TINES</i>						
5/16"	8.50"	-	.3125"	SGS07313	-	-
5/16"	10.00"	-	.3125"	SGS08313	-	-
12mm	8.00"	-	12mm	SGS08500	-	-
12mm	10.75"	-	12mm	SGS10504	-	-

**SR70-S ADAPTER HEAD KIT 117-7194 (16 TINES)**

<i>SOLID TINES</i>						
18mm	12.25"	-	18mm	SGS10750	-	-

**SR70-S ADAPTER HEAD KIT 117-7195 (16 TINES)**

<i>CORING TINES</i>						
12mm	7.00"	.52"	.69"	SGC07624	-	SGT07625
12mm	7.00"	.56"	.81"	SGC07754	-	SGT07750
12mm	10.00"	.56"	.75"	SGC10754	-	SGT10750
<i>SOLID TINES</i>						
5/16"	8.50"	-	.3125"	SGS07313	-	-
5/16"	10.00"	-	.3125"	SGS08313	-	-
12mm	8.00"	-	12mm	SGS08500	-	-
12mm	10.75"	-	12mm	SGS10504	-	-

**SR70-S ADAPTER HEAD KIT 117-7196 (32 TINES)**

<i>CORING TINES</i>						
3/8"	5.50"	.38"	.50"	SGC05550	-	SGT05550
<i>SOLID TINES</i>						
5/16"	8.50"	-	.3125"	SGS07313	-	-
5/16"	10.00"	-	.3125"	SGS08313	-	-
3/8"	9.00"	-	.375"	SGS08375	-	-
3/8"	10.75"	-	.375"	SGS10374	-	-

**SR70-S ADAPTER HEAD KIT 117-7199 (64 TINES)**

<i>CORING TINES</i>						
3/8"	5.50"	.38"	.50"	SGC05550	-	SGT05550
<i>SOLID TINES</i>						
3/8"	9.00"	-	.375"	SGS08375	-	-
3/8"	10.75"	-	.375"	SGS10374	-	-

**12MM OR 18MM MOUNT**

Mount	Length	Core Dia. (ID)	OD	Part	Adapter Sleeve	Replacement Tube
<i>CORING TINES</i>						
12mm Long	7.00"	.52"	.69"	SGC07625*	-	SGT07625
12mm Long	7.00"	.56"	.81"	SGC07750*	-	SGT07750
12mm Long	10.00"	.56"	.75"	SGC10755*	-	SGT10750
12mm Long	10.00"	.56"	.81"	SGC10813H	-	SGT10813H
18mm Long	8.00"	.94"	1.31"	SGC08125	-	SGT08125
18mm Long	8.00"	.74"	1.06"	SGC08100H	-	SGT08100H
18mm Long	10.00"	.56"	.75"	SGC10750	-	SGT10750
18mm Long	10.00"	.74"	1.06"	SGC10100H	-	SGT10100H
18mm Long	10.00"	.76"	1.00"	SGC10100S	-	SGT10100S
18mm Long	12.00"	.94"	1.31"	SGC12125	-	SGT12125

<i>SOLID TINES</i>						
5/16"	8.50"	-	.3125"	SGS07313	SGA08313	-
5/16"	10.00"	-	.3125"	SGS08313	SGA08313	-
3/8"	9.00"	-	.375"	SGS08375	SGA12375	-
3/8"	10.75"	-	.375"	SGS10374	SGA12375	-
3/8"	12.25"	-	.375"	SGS10375	SGA12375	-
12mm	8.00"	-	12mm	SGS08500	-	-
12mm	10.75"	-	12mm	SGS10504	-	-
12mm	12.25"	-	12mm	SGS10500	-	-
12mm	14.25"	-	12mm	SGS12500	-	-
12mm	16.25"	-	12mm	SGS14500	-	-
18mm	12.25"	-	18mm	SGS10750	-	-
18mm	12.50"	-	18mm	SGS10875	-	-
18mm	14.00"	-	18mm	SGS12875	-	-
18mm	14.25"	-	18mm	SGS12750	-	-
18mm	16.00"	-	18mm	SGS14875	-	-
18mm	16.25"	-	18mm	SGS14750	-	-

**SR72 ADAPTER HEAD KIT 117-7190 (60 TINES)**

<i>SOLID TINES</i>						
5/16"	8.50"	-	.3125"	SGS07313	-	-
5/16"	10.00"	-	.3125"	SGS08313	-	-

**SR72 ADAPTER HEAD KIT 117-7191 (60 TINES)**

<i>CORING TINES</i>						
12mm	7.00"	.52"	.69"	SGC07624	-	SGT07625
12mm	7.00"	.56"	.81"	SGC07754	-	SGT07750
12mm	10.00"	.56"	.75"	SGC10754	-	SGT10750

<i>SOLID TINES</i>						
12mm	8.00"	-	12mm	SGS08500	-	-
12mm	12.25"	-	12mm	SGS10500	-	-
12mm	14.25"	-	12mm	SGS12500	-	-
12mm	16.25"	-	12mm	SGS14500	-	-

\*Longer shank tine.

**7/8" MOUNT**

Mount	Length	Core Dia. (ID)	OD	Part	Adapter Sleeve	Replacement Tube
<i>CORING TINES</i>						
18mm Long	8.00"	.94"	1.31"	SGC08125	SG715802	SGT08125
18mm Long	8.00"	.74"	1.06"	SGC08100H	SG715802	SGT08100H
18mm Long	10.00"	.56"	.75"	SGC10750	SG715802	SGT10750
18mm Long	10.00"	.74"	1.06"	SGC10100H	SG715802	SGT10100H
18mm Long	10.00"	.76"	1.00"	SGC10100S	SG715802	SGT10100S
18mm Long	12.00"	.94"	1.31"	SGC12125	SG715802	SGT12125
7/8"	8.00"	.94"	1.31"	SGC08123	-	SGT08125
7/8"	12.00"	.94"	1.31"	SGC12123	-	SGT12125

<i>SOLID TINES</i>						
18mm	12.25"	-	18mm	SGS10750	SG715802	-
18mm	12.50"	-	.875"	SGS10875	SG715802	-
18mm	14.00"	-	.875"	SGS12875	SG715802	-
18mm	14.25"	-	18mm	SGS12750	SG715802	-
18mm	16.00"	-	.875"	SGS14875	SG715802	-
18mm	16.25"	-	18mm	SGS14750	SG715802	-
7/8"	12.50"	-	.875"	SGS10876	-	-
7/8"	14.00"	-	.875"	SGS12876	-	-
7/8"	17.88"	-	1.00"	SGS16100	-	-

**SR75 ADAPTER HEAD KIT 117-7198 (4X12MM = 24 TINES OR 3X18MM = 18 TINES)**

<i>CORING TINES</i>						
12mm Long	7.00"	.52"	.69"	SGC07625*	-	SGT07625
12mm Long	7.00"	.56"	.81"	SGC07750*	-	SGT07750
12mm Long	10.00"	.56"	.81"	SGC10813H	-	SGT10813H
12mm Long	10.00"	.56"	.75"	SGC10755*	-	SGT10750
18mm Long	8.00"	.74"	1.06"	SGC08100H	-	SGT08100H
18mm Long	8.00"	.94"	1.31"	SGC08125	-	SGT08125
18mm Long	10.00"	.56"	.75"	SGC10750	-	SGT07625
18mm Long	10.00"	.76"	1.00"	SGC10100S	-	SGT10100S
18mm Long	10.00"	.74"	1.06"	SGC10100H	-	SGT10100H
18mm Long	12.00"	.94"	1.31"	SGC12125	-	SGT12125

\*Longer shank tine.

ADAPTER HEAD KIT 117-7198 – CONTINUED

Mount	Length	Core Dia. (ID)	OD	Part	Adapter Sleeve	Replacement Tube
<i>SOLID TINES</i>						
12mm	8.00"	–	12mm	SGS08500	–	–
12mm	10.75"	–	12mm	SGS10504	–	–
12mm	12.25"	–	12mm	SGS10500	–	–
12mm	14.25"	–	12mm	SGS12500	–	–
12mm	16.25"	–	12mm	SGS14500	–	–
18mm	12.25"	–	18mm	SGS10750	–	–
18mm	12.50"	–	.875"	SGS10875	–	–
18mm	14.00"	–	.875"	SGS12875	–	–
18mm	14.25"	–	18mm	SGS12750	–	–
18mm	16.00"	–	.875"	SGS14875	–	–
18mm	16.25"	–	18mm	SGS14750	–	–

# COMPETITIVE MODELS



### TITAN® Conversion Sleeves

Part Number	Description	Mount
112-1300	Sleeve	1/2"
112-1301	Sleeve	5/8"

Easily Converts TITAN® Tines to 1/2" and 5/8" mount. Toro® conversion sleeves allow the complete selection of Toro tines to fit on most competitive equipment. The conversion sleeve slides onto a 3/8" mount Toro tine to create a 1/2" mount or 5/8" mount.



**TITAN® TINES COMPETITIVE MODELS**

3/8" MOUNT					TITAN® Max		Competitive Model	
Length	Core Dia. (ID)	OD	Part Number	Wall	Part Number	Core Dia. (ID)	Ryan® GA 24/30/60	John Deere®
<i>TITAN QUAD</i>					<i>QUAD MAX</i>			
4.50"	.25"	.36"	108-9104	.052"	108-9112	.23"	X	X
4.50"	.32"	.46"	108-9105	.063"	108-9114	.28"	X	X
4.50"	.41"	.55"	108-9106	.063"	108-9116	.38"	X	X
4.50"	.48"	.58"	108-9293	.049"	-	-	X	X
5.00"	.25"	.36"	108-9108	.052"	108-9120	.23"	X	X
5.00"	.32"	.46"	108-9109	.063"	108-9122	.28"	X	X
5.00"	.41"	.55"	108-9110	.063"	108-9124	.38"	X	X
5.00"	.48"	.58"	108-9294	.049"	-	-	X	X
<i>TITAN SOLID ROUND</i>								
4.50"	-	.20"	108-9230	-	-	-	X	X
4.50"	-	.25"	108-9231	-	-	-	X	X
4.50"	-	.30"	108-9232	-	-	-	X	X
4.50"	-	.38"	108-9233	-	-	-	X	X
5.50"	-	.20"	108-9234	-	-	-	X	X
5.50"	-	.25"	108-9235	-	-	-	X	X
5.50"	-	.30"	108-9236	-	-	-	X	X
5.50"	-	.38"	108-9237	-	-	-	X	X
<i>TITAN SOLID SLICING</i>								
5.00"	-	.63"	108-9238	-	-	-	X	X
<i>TITAN CROSS</i>					<i>CROSS MAX</i>			
4.50"	-	.38"	108-9215	-	-	-	X	X
4.50"	-	.50"	108-9216	-	112-1310	-	X	X
4.50"	-	.62"	108-9217	-	-	-	X	X
5.50"	-	.38"	108-9218	-	-	-	X*	X
5.50"	-	.50"	108-9219	-	112-1311	-	X*	X
5.50"	-	.62"	108-9220	-	-	-	X*	X

\*Only available on GA 30/60 models

**TITAN® TINES COMPETITIVE MODELS**

1/2" MOUNT					TITAN® Max		Competitive Model	
Length	Core Dia. (ID)	OD	Part Number	Wall	Part Number	Core Dia. (ID)	Ryan® GA 24/30/60	John Deere®
<i>TITAN QUAD</i>					<i>QUAD MAX</i>			
4.50"	.32"	.46"	112-1316	.063"	112-1322	.28"	X	-
<i>TITAN SOLID ROUND</i>								
4.50"	-	.50"	112-1347	-	-	-	X	-
5.50"	-	.25"	112-1329	-	-	-	X	-
<i>TITAN SOLID SLICING</i>								
5.00"	-	.63"	112-5102	-	-	-	X	-
<i>TITAN QUAD</i>					<i>QUAD MAX</i>			
4.50"	.32"	.46"	112-1316	.063"	112-1322	.28"	X	-
<i>5/8" MOUNT</i>					<i>TITAN® Max</i>		<i>Competitive Model</i>	
Length	Core Dia. (ID)	OD	Part Number	Wall	Part Number	Core Dia. (ID)	Ryan® GA 24/30/60	John Deere®
<i>TITAN SIDE EJECT</i>								
4.50"	.43"	.56"	112-1303	.058"	-	-	-	-
<i>TITAN SOLID ROUND</i>								
4.50"	-	.63"	112-1348	-	-	-	X	-
<i>TITAN SOLID SLICING</i>								
5.00"	-	.63"	112-5103	-	-	-	X	-

\*Only available on GA 30/60 models



**QUICK REFERENCE**

Mount	Length	ID	OD	Wall Thickness	Part Number	TITAN® Max Part Number
<i>TITAN Quad &amp; Quad Max</i>						
1/2"	4.50"	.32"	.46"	.063"	112-1316	-
3/8"	4.50"	.25"	.36"	.052"	108-9104	108-9112
3/8"	4.50"	.32"	.46"	.063"	108-9105	108-9114
3/8"	4.50"	.41"	.55"	.063"	108-9106	108-9116
3/8"	4.50"	.48"	.58"	.049"	108-9293	-
3/8"	5.00"	.25"	.36"	.052"	108-9108	108-9120
3/8"	5.00"	.32"	.46"	.063"	108-9109	108-9122
3/8"	5.00"	.41"	.55"	.063"	108-9110	108-9124
3/8"	5.00"	.48"	.58"	.049"	108-9294	-
3/8"	5.50"	.41"	.55"	.063"	108-9290	-
5/8"	4.50"	.32"	.46"	.063"	112-1332	112-1338

*TITAN Hollow & Hollow Max*

3/4"	4.75"	.28"	.46"	.058"	108-9128	108-9139
3/4"	4.75"	.41"	.56"	.058"	108-9129	108-9141
3/4"	4.75"	.53"	.66"	.058"	108-9130	108-9143
3/4"	5.75"	.28"	.46"	.058"	108-9132	-
3/4"	5.75"	.41"	.56"	.058"	108-9133	108-9147
3/4"	5.75"	.53"	.66"	.058"	108-9134	108-9149
3/4"	6.50"	.28"	.46"	.058"	108-9138	108-9135
3/4"	6.50"	.41"	.56"	.058"	108-9136	108-9151
3/4"	6.50"	.53"	.66"	.058"	108-9137	108-9153
7/8"	4.75"	.51"	.66"	.058"	108-9190	-
7/8"	4.75"	.63"	.76"	.058"	108-9191	-
7/8"	5.75"	.51"	.66"	.058"	108-9192	-
7/8"	5.75"	.63"	.76"	.058"	108-9193	-

*TITAN Hollow Ext. Taper & Ext. Taper Max*

3/4"	5.75"	.47"	.68"	.058"	114-0553	-
3/4"	5.75"	.53"	.66"	.058"	114-0551	114-0553
3/4"	6.50"	.53"	.66"	.058"	114-0550	-

*TITAN Side Eject & Side Eject Max*

3/4"	4.75"	.28"	.46"	.058"	108-9159	108-9170
3/4"	4.75"	.41"	.56"	.058"	108-9160	108-9172
3/4"	4.75"	.53"	.66"	.058"	108-9161	108-9174
3/4"	5.75"	.28"	.46"	.058"	108-9163	108-9176
3/4"	5.75"	.41"	.56"	.058"	108-9164	108-9178
3/4"	5.75"	.53"	.66"	.058"	108-9165	108-9180
3/4"	6.50"	.28"	.46"	.058"	108-9162	108-9166
3/4"	6.50"	.41"	.56"	.058"	108-9167	108-9182
3/4"	6.50"	.53"	.66"	.058"	108-9168	108-9184
5/8"	4.50"	.43"	.56"	.058"	112-1303	-
7/8"	4.75"	.51"	.66"	.058"	108-9194	-
7/8"	4.75"	.63"	.76"	.058"	108-9195	-
7/8"	5.75"	.51"	.66"	.058"	108-9196	108-9188
7/8"	5.75"	.63"	.76"	.058"	108-9197	-

*TITAN Side Eject Ext. Taper & Ext. Taper Max*

3/4"	5.75"	.53"	.66"	.058"	114-0555	114-0557
3/4"	6.50"	.53"	.66"	.058"	114-0558	114-0560

**QUICK REFERENCE**

Mount	Length	ID	OD	Wall Thickness	Part Number	TITAN® Max Part Number
<i>Classic Hollow</i>						
3/4"	4.75"	.40"	.50"	.049"	66-9140	-
3/4"	4.75"	.50"	.63"	.049"	59-3670	-
3/4"	5.75"	.51"	.63"	.058"	104-0984	-
3/4"	6.50"	.39"	.66"	.058"	105-1180	-
7/8"	4.75"	.60"	.75"	.065"	62-4600	-
7/8"	5.75"	.60"	.75"	.065"	86-9720	-

*Fairway*

3/4"	5.75"	.51"	.77"	.120"	104-9876	-
3/4"	5.75"	.51"	.88"	.120"	104-9875	-
7/8"	4.75"	.64"	.88"	.122"	92-7941	-
7/8"	5.75"	.64"	.88"	.122"	92-7900	-
7/8"	5.75"	.64"	1.0"	.120"	104-9877	-

*TITAN HD Fairway*

3/4"	5.75"	.51"	.77"	.120"	108-9260	-
3/4"	5.75"	.51"	.88"	.120"	108-9261	-
7/8"	5.75"	.64"	.88"	.122"	108-9264	-
7/8"	5.75"	.64"	1.0"	.122"	108-9265	-

*TITAN Split*

3/4"	5.75"	.51"	.88"	.120"	112-5122	-
7/8"	5.75"	.64"	.88"	.120"	112-5121	-
7/8"	5.75"	.64"	.92"	.120"	112-5123	-

*TITAN Solid Round*

1/2"	4.50"	-	.50"	-	112-1347	-
1/2"	5.50"	-	.25"	-	112-1329	-
3/4"	4.50"	-	.25"	-	108-9198	-
3/4"	4.50"	-	.30"	-	108-9199	-
3/4"	4.50"	-	.35"	-	108-9200	-
3/4"	4.50"	-	.40"	-	108-9201	-
3/4"	4.50"	-	.50"	-	108-9202	-
3/4"	4.50"	-	.60"	-	108-9203	-
3/4"	5.50"	-	.25"	-	108-9204	-
3/4"	5.50"	-	.30"	-	108-9205	-
3/4"	5.50"	-	.35"	-	108-9206	-
3/4"	5.50"	-	.40"	-	108-9207	-
3/4"	5.50"	-	.50"	-	108-9208	-
3/4"	5.50"	-	.60"	-	108-9209	-
3/4"	5.50"	-	.75"	-	108-9244	-
3/4"	6.50"	-	.30"	-	108-9210	-
3/4"	6.50"	-	.35"	-	108-9211	-
3/4"	6.50"	-	.40"	-	108-9212	-
3/4"	6.50"	-	.50"	-	108-9213	-
3/4"	6.50"	-	.60"	-	108-9214	-
3/4"	6.50"	-	.75"	-	108-9245	-
3/8"	4.50"	-	.20"	-	108-9230	-
3/8"	4.50"	-	.25"	-	108-9231	-
3/8"	4.50"	-	.30"	-	108-9232	-
3/8"	4.50"	-	.38"	-	108-9233	-
3/8"	5.50"	-	.20"	-	108-9234	-
3/8"	5.50"	-	.25"	-	108-9235	-
3/8"	5.50"	-	.30"	-	108-9236	-
3/8"	5.50"	-	.38"	-	108-9237	-
5/8"	4.50"	-	.63"	-	112-1348	-
7/8"	5.50"	-	.75"	-	108-9246	-
7/8"	5.50"	-	.88"	-	108-9247	-
7/8"	6.50"	-	.75"	-	108-9248	-
7/8"	6.50"	-	.88"	-	108-9249	-

**QUICK REFERENCE**

Mount	Length	ID	OD	Wall Thickness	Part Number	TITAN® Max Part Number
<i>TITAN Solid Slicing</i>						
1/2"	5.00"	–	.63"	–	112-5102	–
3/4"	4.50"	–	.75"	–	108-9239	–
3/4"	5.50"	–	.75"	–	108-9240	–
3/4"	6.50"	–	.75"	–	108-9241	–
3/8"	5.00"	–	.63"	–	108-9238	–
5/8"	5.00"	–	.63"	–	112-5103	–
7/8"	5.50"	–	.75"	–	108-9242	–
7/8"	6.50"	–	.75"	–	108-9243	–

Mount	Length	ID	OD	Wall Thickness	Part Number	TITAN® Max Part Number
<i>TITAN Cross &amp; Cross Max</i>						
3/4"	4.50"	–	.50"	–	108-9221	–
3/4"	4.50"	–	.75"	–	108-9223	–
3/4"	5.50"	–	.50"	–	108-9224	112-1313
3/4"	5.50"	–	.75"	–	108-9226	–
3/4"	6.50"	–	.50"	–	108-9227	112-1314
3/4"	6.50"	–	.62"	–	108-9228	–
3/4"	6.50"	–	.75"	–	108-9229	–
3/8"	4.50"	–	.38"	–	108-9215	–
3/8"	4.50"	–	.50"	–	108-9216	112-1310
3/8"	4.50"	–	.62"	–	108-9217	–
3/8"	5.50"	–	.38"	–	108-9218	–
3/8"	5.50"	–	.50"	–	108-9219	112-1311
3/8"	5.50"	–	.62"	–	108-9220	–
7/8"	5.50"	–	.88"	–	108-9259	–

Mount	Length	ID	OD	Wall Thickness	Part Number	TITAN® Max Part Number
<i>TITAN Needle Tine</i>						
Needle	6.43"	–	.188"	–	100-3620	–
Needle	7.38"	–	.313"	–	100-3621	–
Needle	5.43"	–	5mm	–	125-3319	–

**QUICK REFERENCE**

Mount	Length	ID	OD	Wall Thickness	Part Number	TITAN® Max Part Number
<i>SR Series Deep Tine</i>						
5/16"	10.00"	–	.31"	–	SGS08313	–
5/16"	8.50"	–	.31"	–	SGS07313	–
12 mm	10.00"	.56"	.75"	–	SGC10754	–
12 mm	10.00"	.56"	.75"	–	SGC10755*	–
12 mm	10.00"	.56"	.81"	–	SGC10813H	–
12 mm	10.75"	–	.47"	–	SGS10504	–
12 mm	12.25"	–	.47"	–	SGS10500	–
12 mm	14.25"	–	.47"	–	SGS12500	–
12 mm	16.25"	–	.47"	–	SGS14500	–
12 mm	7.00"	.52"	.69"	–	SGC07624	–
12 mm	7.00"	.52"	.69"	–	SGC07625*	–
12 mm	7.00"	.56"	.81"	–	SGC07754	–
12 mm	7.00"	.56"	.81"	–	SGC07750*	–
12 mm	8.00"	–	.47"	–	SGS08500	–
18 mm	10.00"	.56"	.75"	–	SGC10750	–
18 mm	10.00"	.74"	1.06"	–	SGC10100H	–
18 mm	10.00"	.76"	1.00"	–	SGC10100S	–
18 mm	12.00"	.94"	1.31"	–	SGC12125	–
18 mm	12.25"	–	.71"	–	SGS10750	–
18 mm	12.50"	–	.88"	–	SGS10875	–
18 mm	14.00"	–	.88"	–	SGS12875	–
18 mm	14.25"	–	.71"	–	SGS12750	–
18 mm	16.00"	–	.88"	–	SGS14875	–
18 mm	16.25"	–	.71"	–	SGS14750	–
18 mm	8.00"	.74"	1.06"	–	SGC08100H	–
18 mm	8.00"	.94"	1.31"	–	SGC08125	–
3/8"	10.75"	–	.38"	–	SGS10374	–
3/8"	12.25"	–	.38"	–	SGS10375	–
3/8"	5.50"	.38"	.50"	–	SGC05550	–
3/8"	9.00"	–	.38"	–	SGS08375	–
7/8"	12.00"	.94"	1.31"	–	SGC12123	–
7/8"	12.50"	–	.88"	–	SGS10876	–
7/8"	14.00"	–	.88"	–	SGS12876	–
7/8"	17.88"	–	1.00"	–	SGS16100	–
7/8"	8.00"	.94"	1.31"	–	SGC08123	–

\*Longer shank tine.